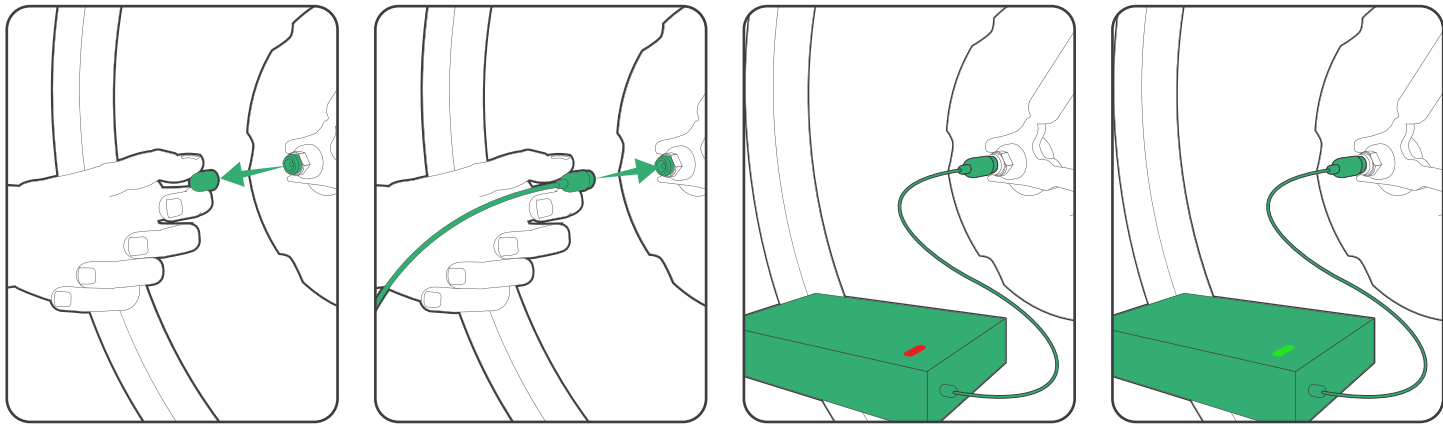


# THE ALL IN ONE QUICK GUIDE

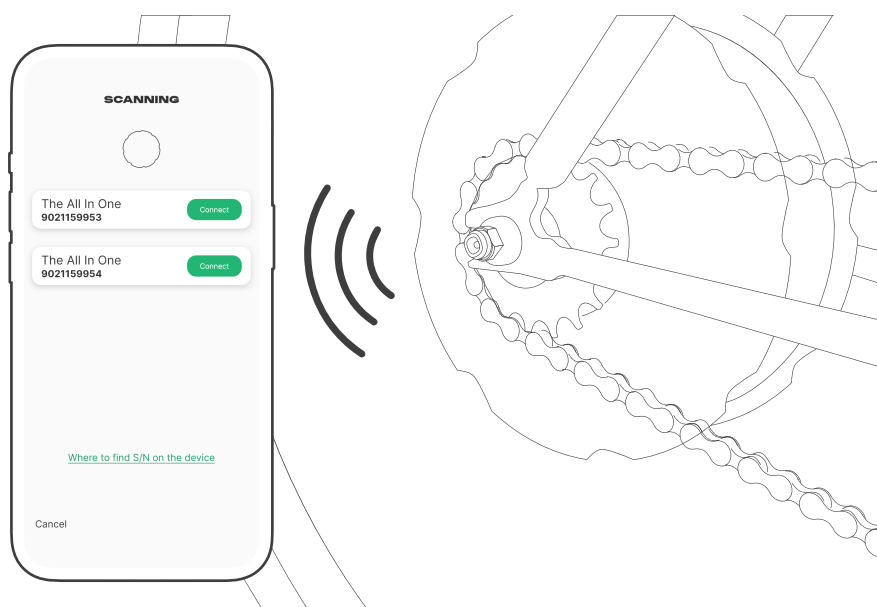
EN

ZEHUS

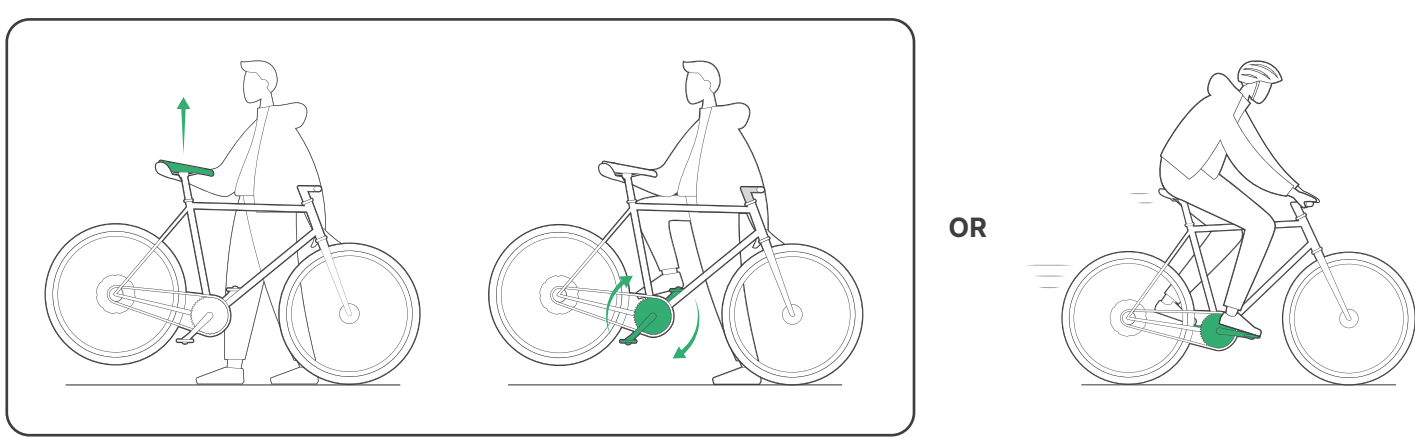
**1** Remove the protection cap, plug in the charger and wait until the charger LED is green to indicate the charge is complete.



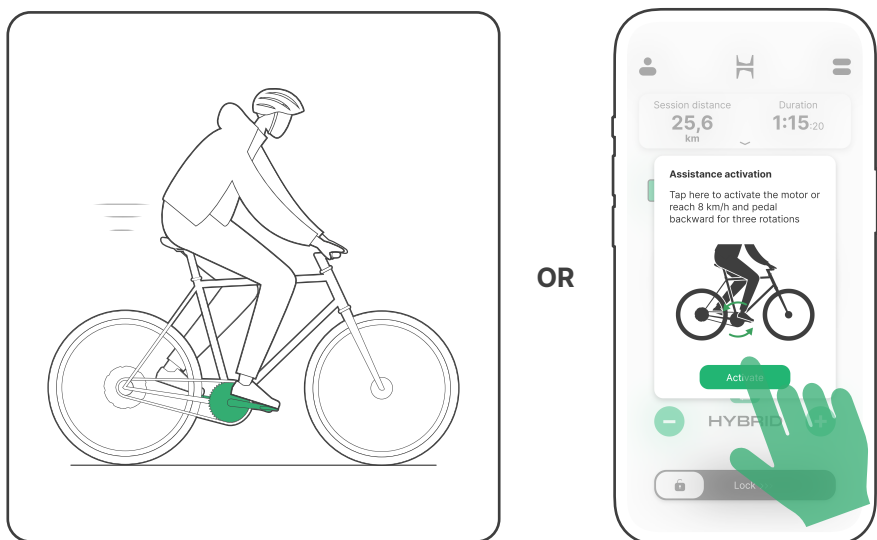
**2** Register the device via the Zehus App.



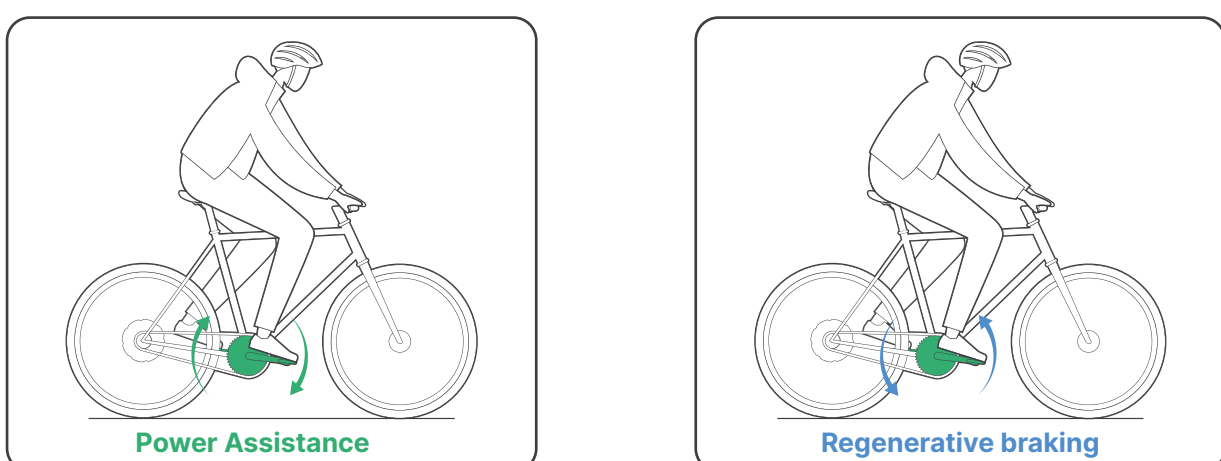
**3** To turn The All In One on lift and turn the pedals or start pedaling.



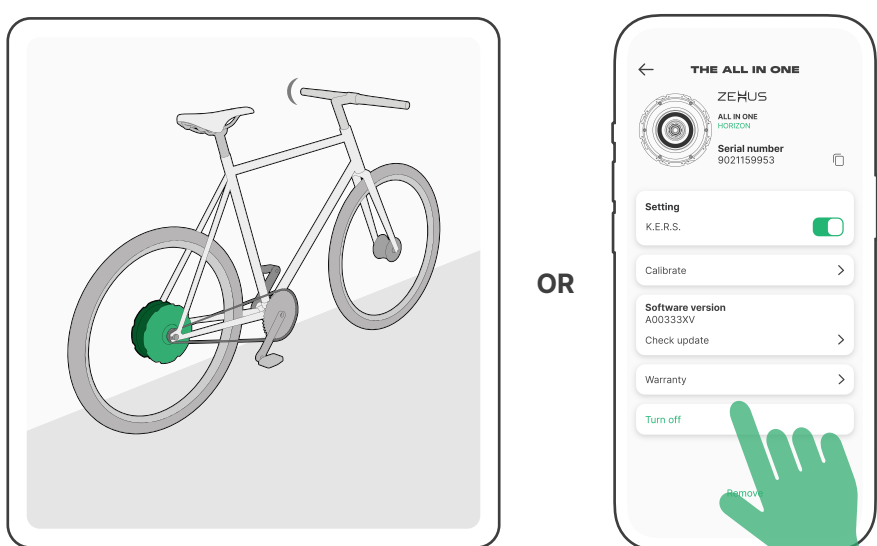
**4** Activate assistance by pedaling backward for three rotations or via App.



**5** Pedal forward to receive assistance and backward to brake and regenerate energy.



**6** Motor automatically turns off after 2 minutes of inactivity. You can use also the App or the Controller for this purpose.



## Safety notes!

- Always use The All In One with the protective close nuts.
- Always turn off The All In One during maintenance, servicing and handling.
- Protect The All In One from severe heat, fire and high pressure water-jets.
- DO NOT open the unit yourself.
- Charge the battery in a dry and clean environment.

Subject to change without notice.

The specifications on this document are subject to change at Zehus decision. Zehus assumes no responsibility for any claims or damages arising out of the use of this document, or from the use of modules based on this document, including but not limited to claims or damages based on infringement of patents, copyrights or other intellectual property rights.

Rev. 0.2 - 03/2023