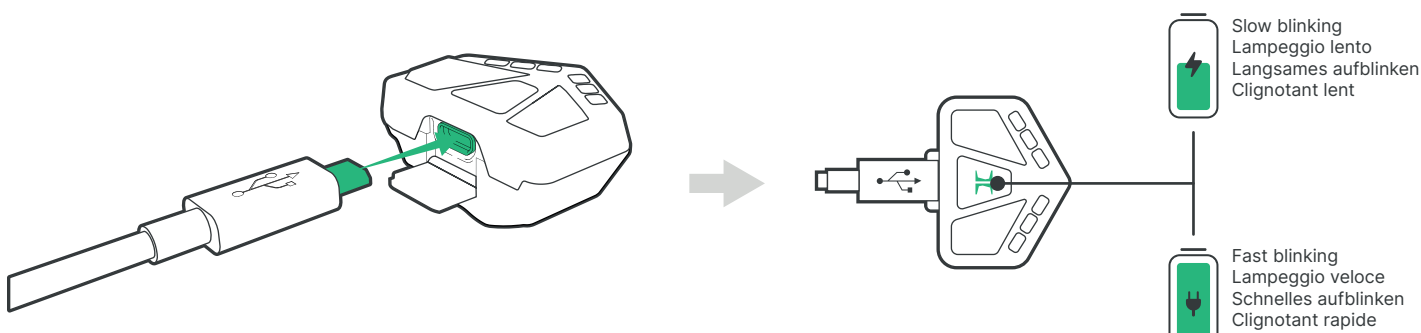


CONTROLLER QUICK GUIDE

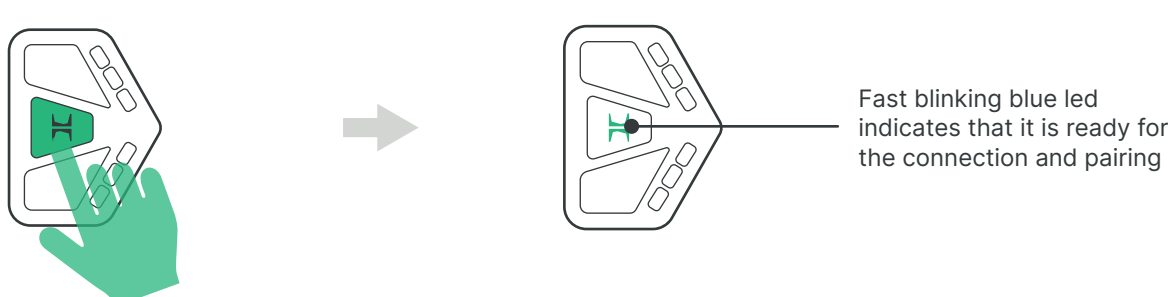
EN

ZEHUS

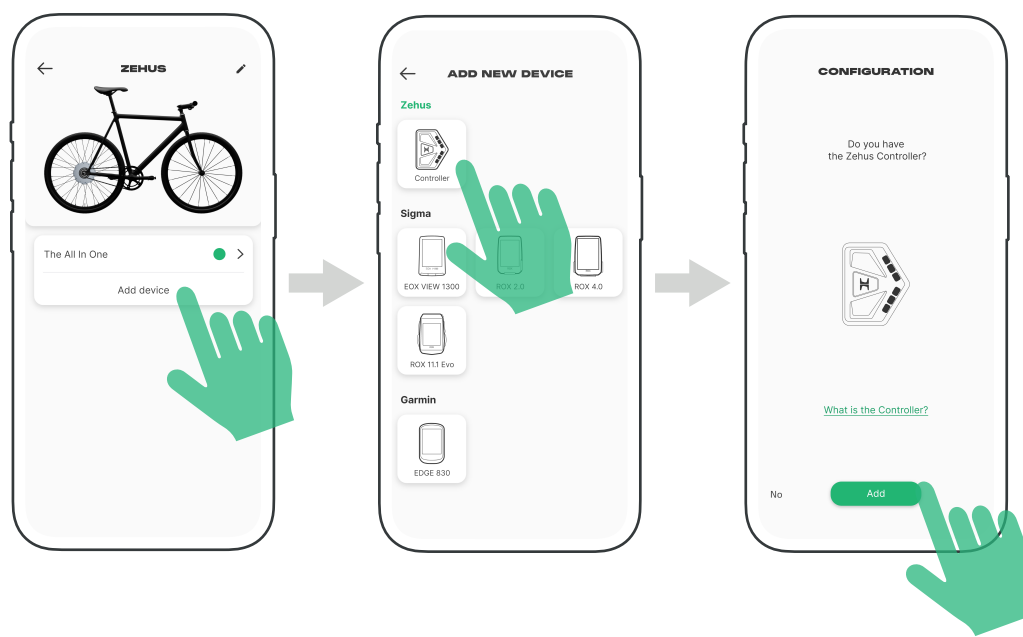
1 Charge the device before use.



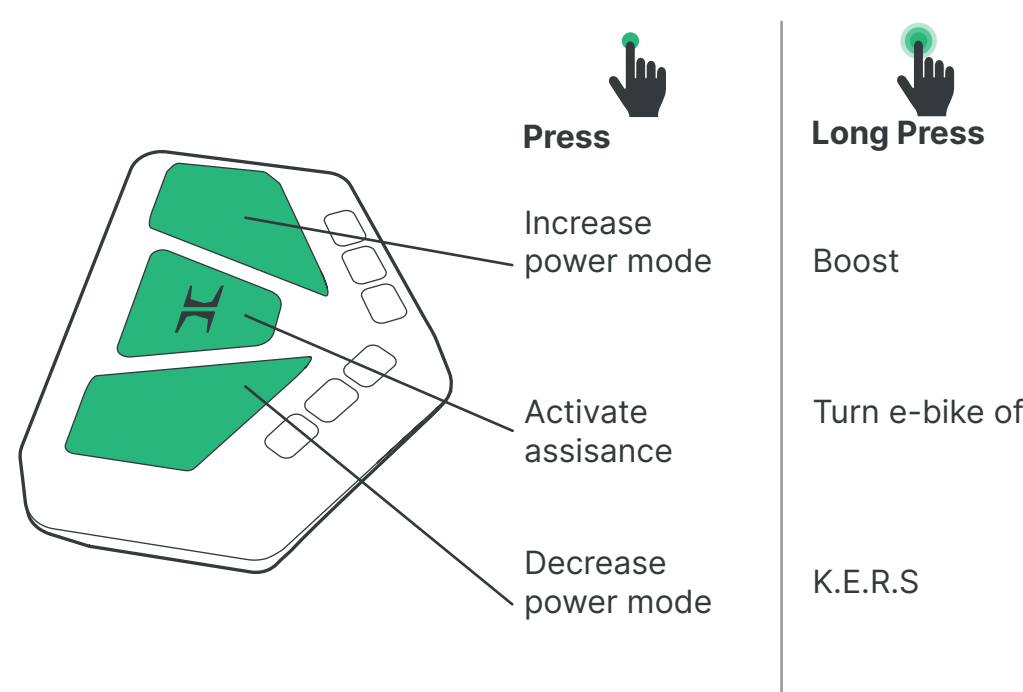
2 Turn the device on with the center button.



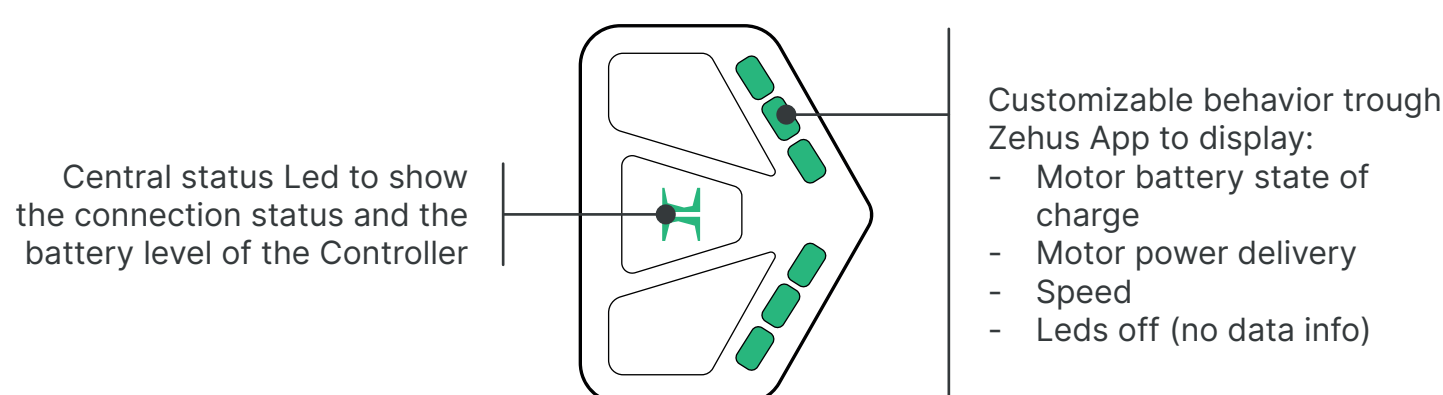
3 Pair your Controller with the Zehus App, through the vehicle menu voice "Add device", then follow the steps.



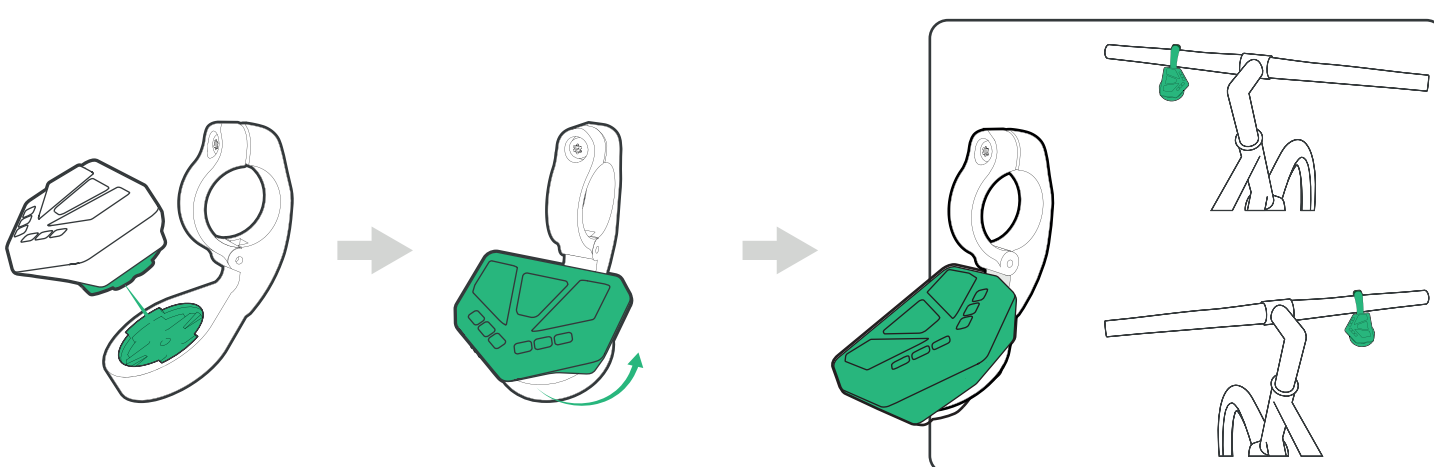
4 Controller functions



5 Status LEDs and dynamic LED indicators



6 Mount the Controller on the bike handlebars using the dedicated mount



Safety notes!

- Always use The All In One with the protective close nuts.
- Always turn off The All In One during maintenance, servicing and handling.
- Protect The All In One from severe heat, fire and high pressure water-jets.
- DO NOT open the unit yourself.
- Charge the battery in a dry and clean environment.

Subject to change without notice.

The specifications on this document are subject to change at Zehus decision. Zehus assumes no responsibility for any claims or damages arising out of the use of this document, or from the use of modules based on this document, including but not limited to claims or damages based on infringement of patents, copyrights or other intellectual property rights.

Rev. 0.2 - 03/2023